

# GPW 13: achieving impact for people at country level



## Mission

**Promote health – keep the world safe – serve the vulnerable**

## Strategic Priorities (and goals)

**Ensuring healthy lives and promoting well-being for all at all ages by :**

**Achieving universal health coverage** – 1 billion more people benefitting from universal health coverage

**Addressing health emergencies** – 1 billion more people better protected from health emergencies

**Promoting healthier populations** – 1 billion more people enjoying better health and well-being

## Strategic shifts

**Stepping up leadership**– diplomacy and advocacy; gender equality, health equity and human rights; multisectoral action; finance

**Drive public health impact in every country**– differentiated approach based on capacity and vulnerability

**Policy dialogue**  
–to develop systems of the future

**Strategic support**  
–to build high performing systems

**Technical assistance**  
–to build national institutions

**Service delivery**–to fill critical gaps in emergencies

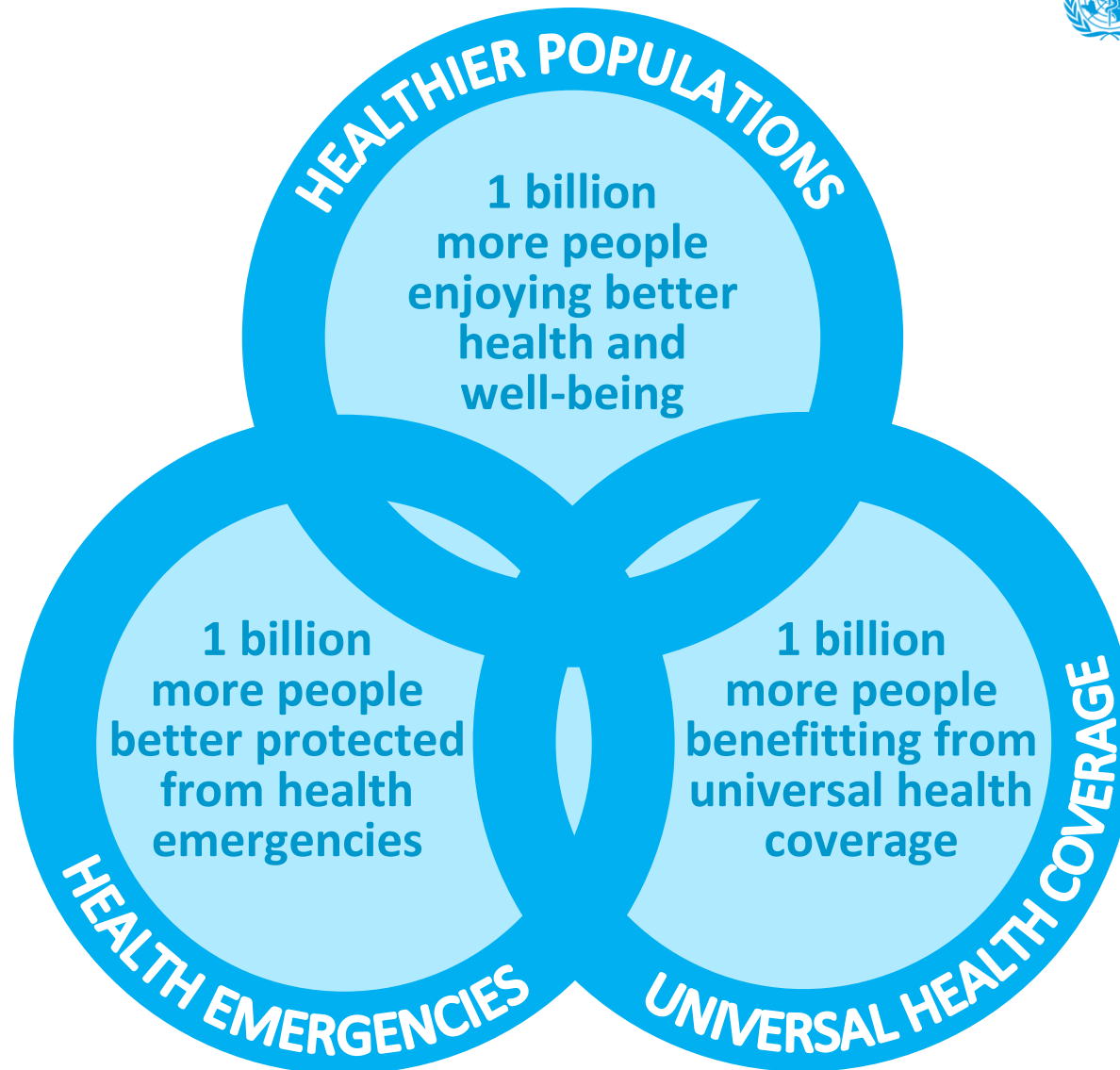
**Focus global public goods on impact**– normative guidance and agreements; data, research and innovation

Mature health system

Fragile health system

## Organizational shifts

- **Measure impact** to be accountable and manage for results
- **Reshape operating model** to drive country, regional and global impacts
- **Transform partnerships, communications and financing** to resource the strategic priorities
- **Strengthen critical systems and processes** to optimize organizational performance
- **Foster culture change** to ensure a seamless, high-performing WHO



# Five platforms contribute to the three strategic goals



**Improving Human Capital across the life course**

**Accelerating action on preventing NCDs and promoting mental health**

**Accelerating elimination & eradication of high impact communicable diseases**

**Tackling anti-microbial resistance**

**Addressing health effects of climate change in small island developing states and other vulnerable states**