

Turning progress and success into assets for sustainable national health systems



Global challenges – major progress



Global Polio Eradication Initiative

Established in 1988



UNAIDS

Established in 1994

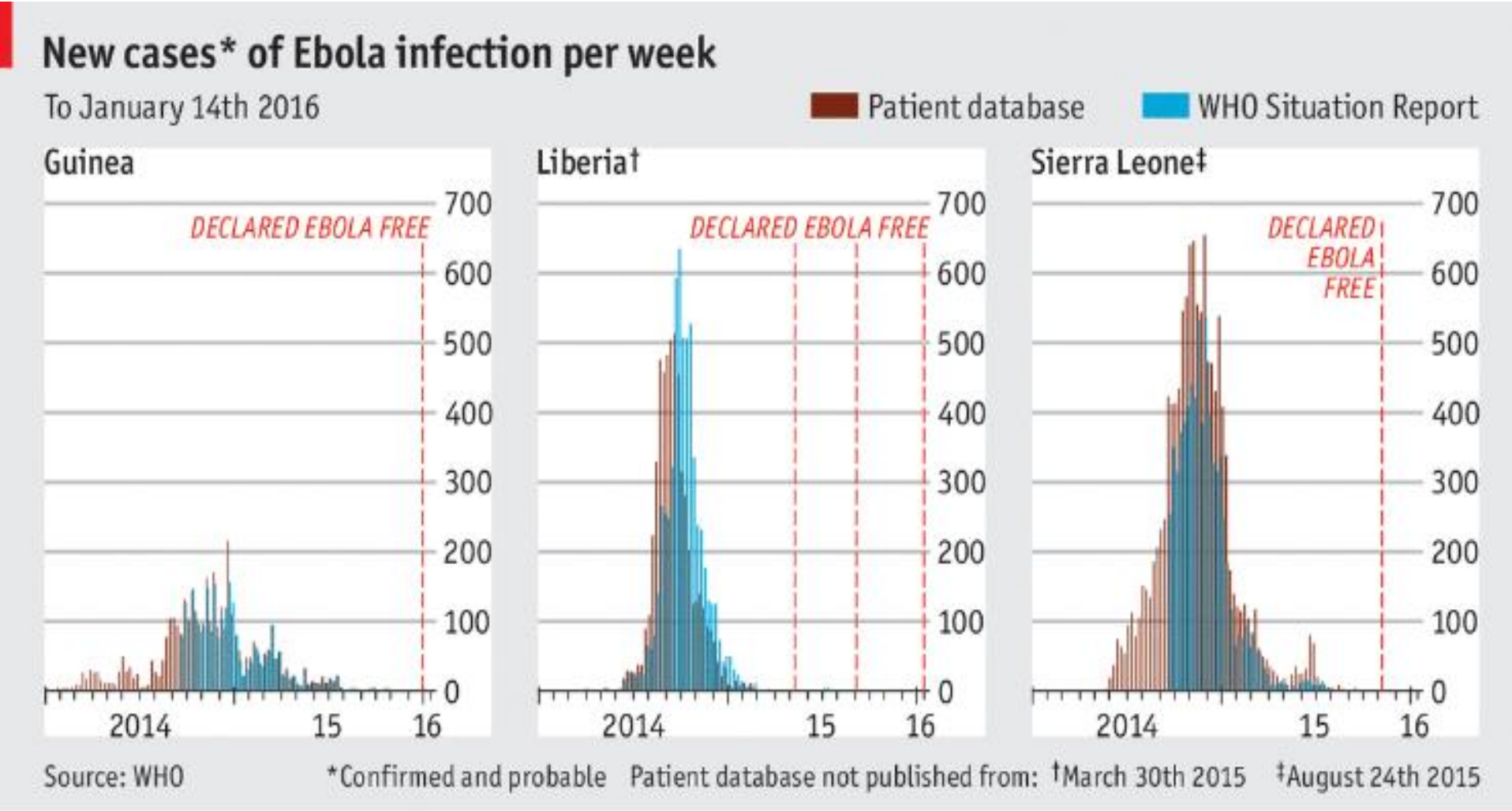


GAVI

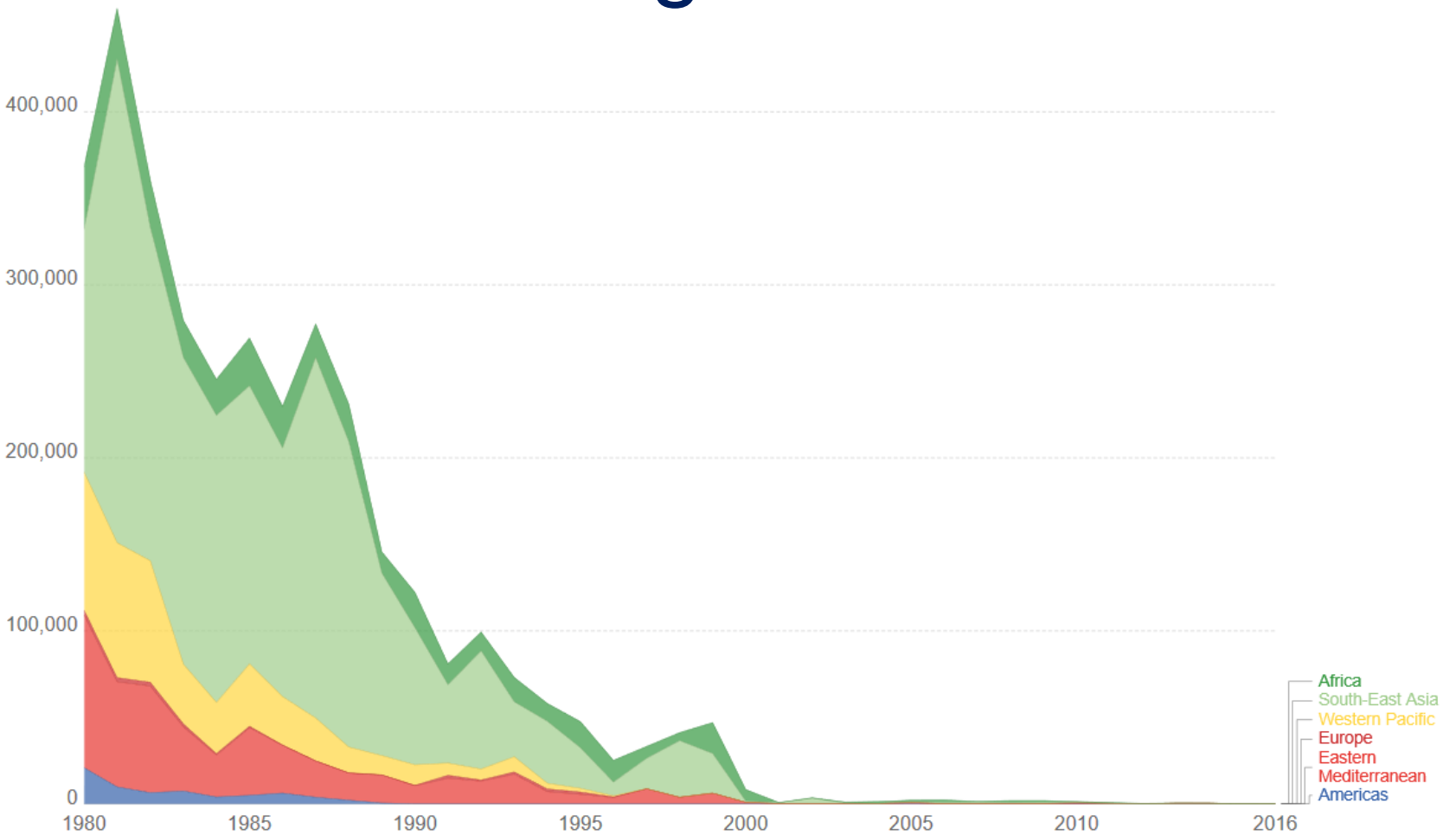
Established in 2000



Largest EVD outbreak in history



Number of estimated paralytic polio cases by world region over time

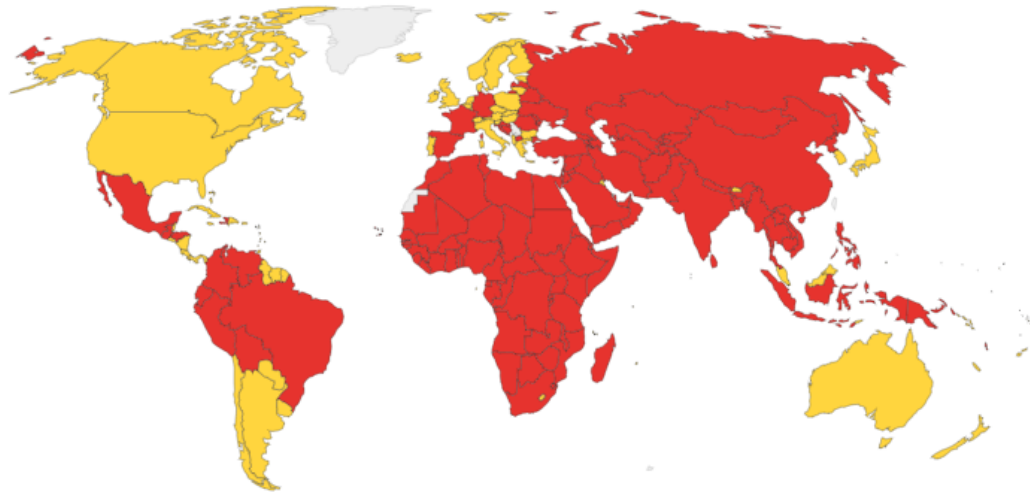


Source: WHO (2018) and Tebbens et al. (2011)

OurWorldInData.org/polio/ • CC BY-SA

Endemic countries and polio-free countries

1988

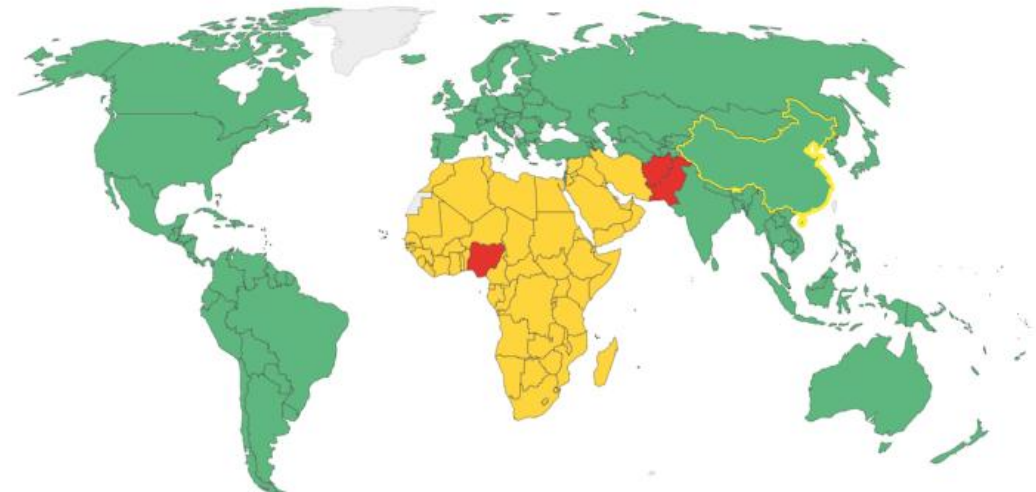


□ No data □ endemic □ polio-free (not certified) □ WHO Region certified polio-free

Source: GPEI (2017)

CC BY-SA

2017



□ No data □ endemic □ polio-free (not certified) □ WHO Region certified polio-free

Source: GPEI (2017)

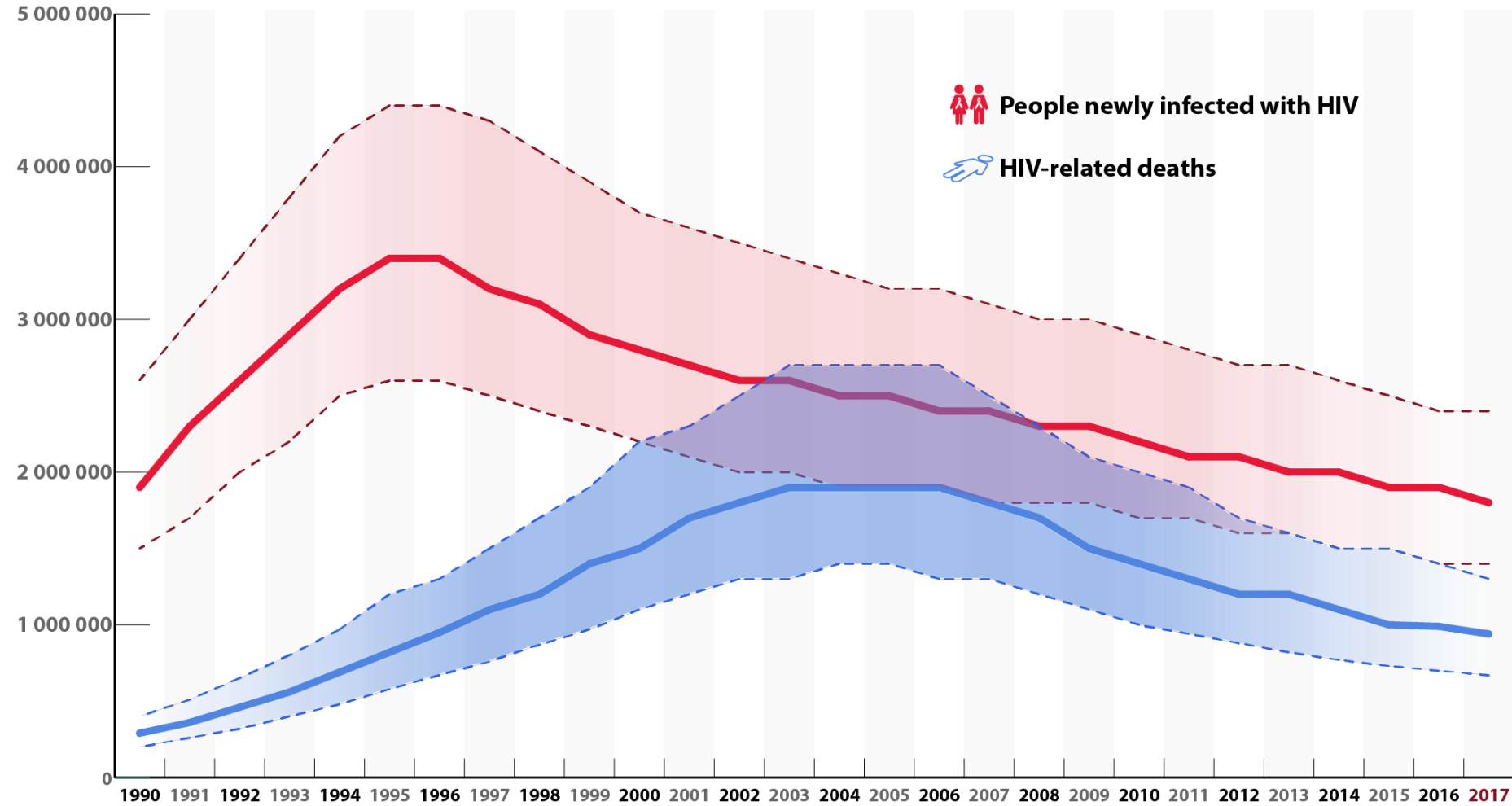
CC BY-SA



Regeringskansliet

POLIO GLOBAL ERADICATION INITIATIVE

Decline in HIV incidence and mortality over time

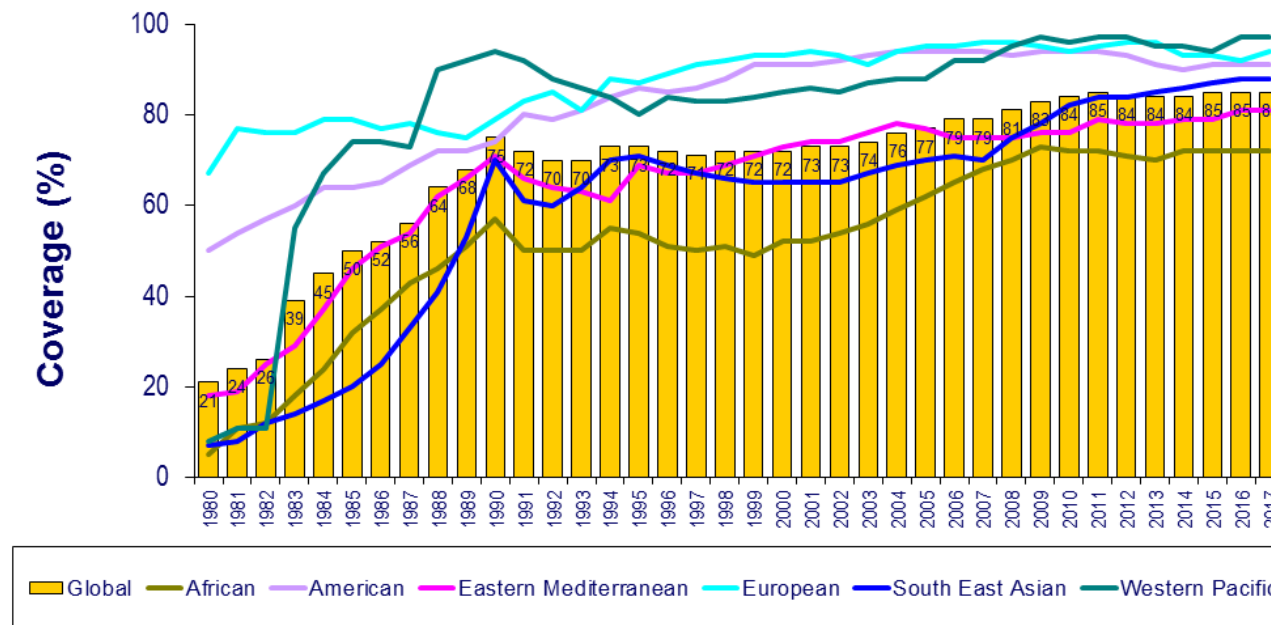


Source: UNAIDS/WHO estimates

Vaccination coverage over time

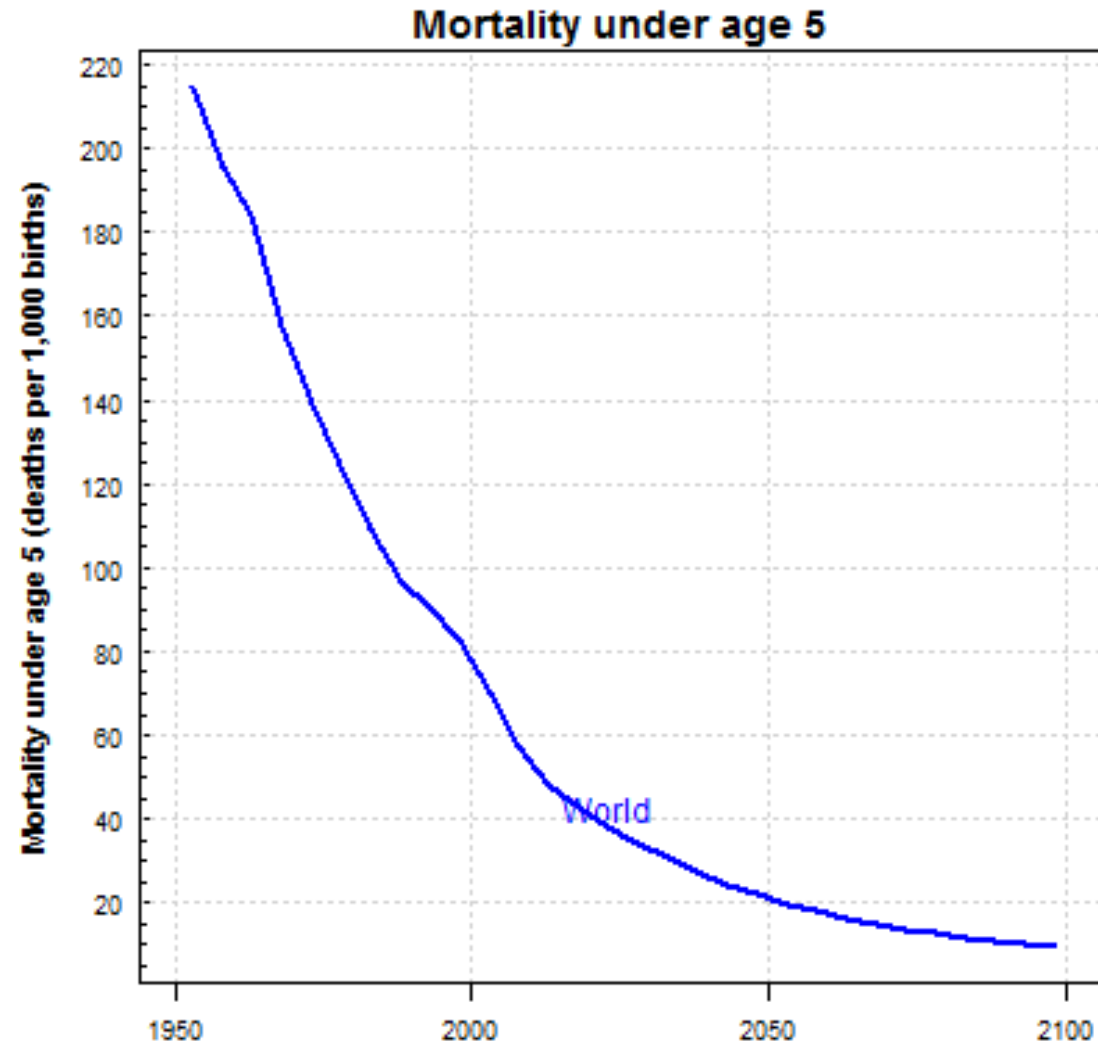
Global Immunization 1980-2017

Global coverage from 3 dose of DTP containing vaccines at 85% in 2017



Source: WHO/UNICEF

Child mortality over time



Source: UN Population Division

The assets

- Strategies, ways of working - lessons
- Human resources, capacity and competences
- Infrastructure
- Political momentum
- Financial resources

Examples.....



Multisectorial work - NCDs
Partnership incl CSOs



New products - Market shaping
Immunisation systems – Health Systems



Surveillance – IHR and Global Health Security
Logistics – Public health Emergencies

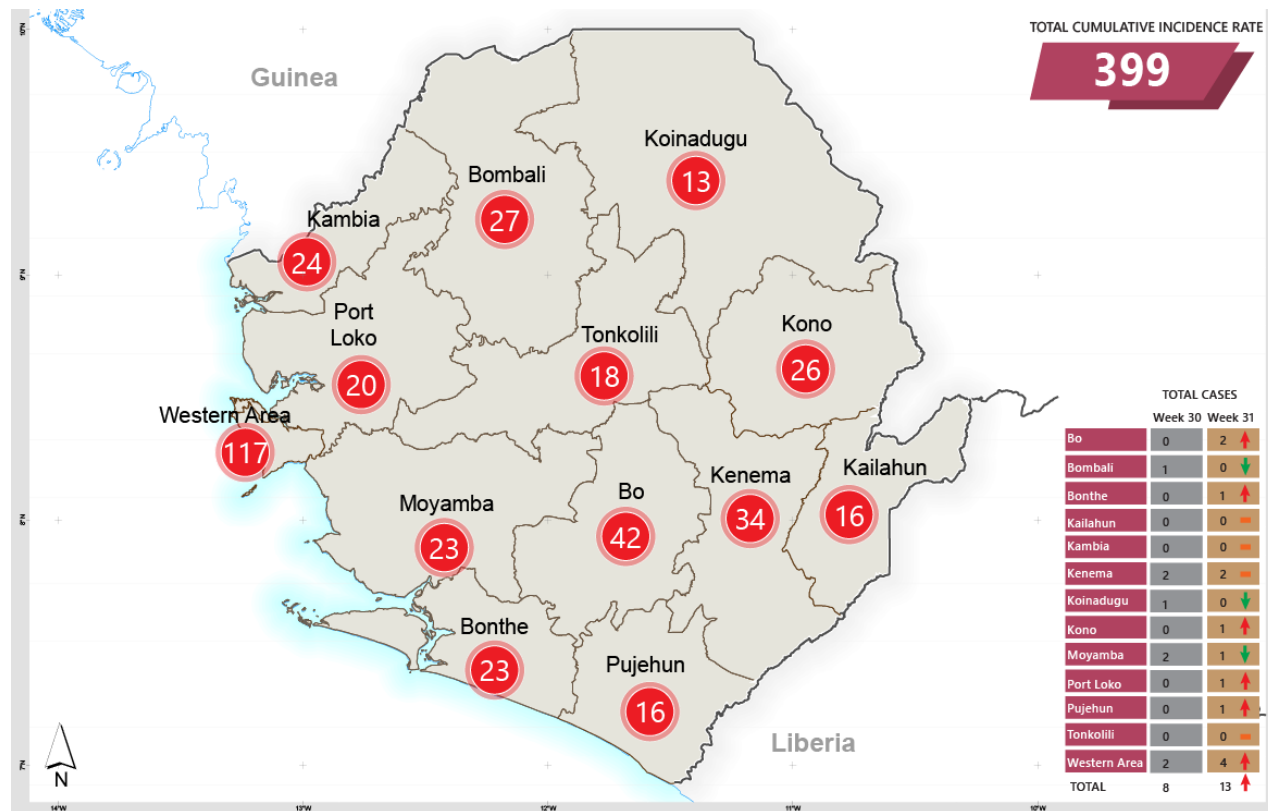
From Ebola emergency to a well functioning health system



Applying the EVD ways of working on the challenge of having the highest Maternal Mortality Rate in the world

MMR 2015: **1,360** compared to average of 542 for the African region average and 216 globally

Reported Maternal Deaths by District, Week 1 to 31, 2016
An average of 13 Maternal Deaths being reported per week countrywide



- **Clear target; Getting to Zero as part of a National RMNCH strategy**
- **Maternal deaths surveillance (MDSR) – reporting all cases**
- **Investigations; Maternal death reviews**
- **- EmONC training – Improving case management**
- **- Referral system**



A resilient health system

“A health system’s resilience can be defined as the capacity of health actors, institutions and populations to prepare for and effectively respond to crisis; maintain core functions when the crisis hits; and, informed by lessons learnt during the crisis, reorganise if required.”

Lancet May 2015

